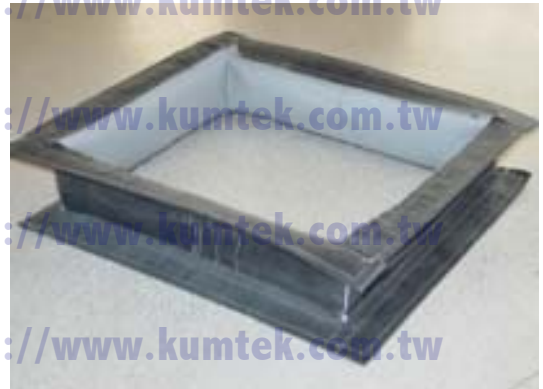


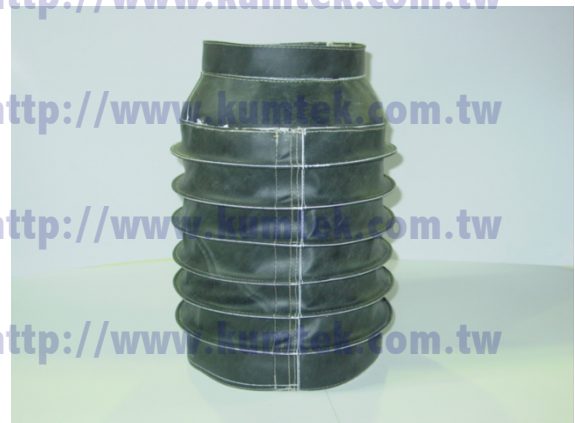
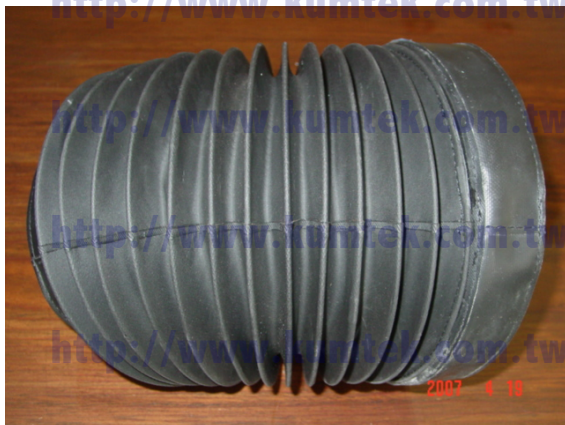
基材: KM600 系耐高温布  
 表面 Coating: Neoprene (黑色防火橡胶)  
 耐温: 130°C max.  
 特性: 气密性, 耐油水耐磨,  
 应用范围: 防震接头, 伸缩蛇管,  
 台北市捷运系统合格之防震接头材料  
 符合:

CNS 10285/A2 一级耐燃标准  
 BS476, Part 7-1997 耐燃标准



产品数据

产品代号	厚度 (mm)	标称单位面积重 (g/m <sup>2</sup> )	颜色	张力强度 (N/50mm)	每卷尺寸 (m) 卷宽 x 卷长
5-70N/N	0.54	700	Black	4500 x 3250	1.55 x 50
12-106N/N	1.20	1060	Black	2240 x 1800	1.2 x 50



Thermotech cannot predict all of the potential applications for which customers may attempt to use our products. Our products will have varying degrees of effectiveness for each potential application depending on the maximum temperature attained the length of use, and the amount of temperature fluctuation. If the customer has any questions regarding the use of our products in a particular application, please contact Thermotech and we will provide a sample for testing.

This product is not warranted against injuries or damages of any kind caused by uses for which this product was not designed, intended, or tested by Thermotech

*Your Solution for Insulation Since 1989!*